



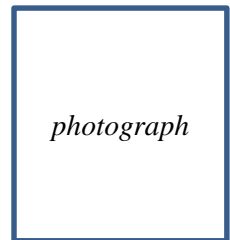
Confirmed Nominees for INWES Board of Directors 2024-2026

The following are nominees who will stand for election for the Board of Directors 2024-2026. They are listed in alphabetical order (last name). They are in the following format.

- 0. Name of Nominee (First name + Last Name)**
Affiliation
(INWES member organization that the nominee represents)
Country, Region

Other Affiliation

Statement of Purpose (250words)



- 1. Vicky Ghafi Kondi Akara**
AFSTech/Sénégal
Togo, French Speaking Sub-Saharan Africa

African Institute for Mathematical Sciences (AIMS)



In 2015, I became involved with INWES by participating in INWES activities with the President at COP15 in Paris. Since then, INWES has become an integral part of my life. I was elected as a director of INWES, representing ARN and FLA. I acted as a liaison between ARN and the board after Fatoumata Balder (2021-2023) passed away. In addition to my role as a researcher, I lead the efforts for Gender, Equity, Diversity, and Inclusion (GEDI) in Rwanda at my institution, the African Institute for Mathematical Sciences (AIMS). Moreover, I actively promote STEM education in several high schools across Rwanda. Besides being an FLA member, I am actively involved in creating an office in Ivory Coast. I am also launching STEM outreach programs in Togo. My efforts in promoting gender equality in STEM activities in Africa have been recognized by the Africa STEM Network. I look forward to participating in and contributing to activities that bolster the international women's network in STEM. I will do this by joining the board of directors of INWES for the next three years. I would like to serve on the executive committee of the association. I would like to focus on enhancing fundraising, research, and education, as well as starting joint research endeavors on women in STEM. Thank you for considering my application. I am looking forward to the opportunity to work towards advancing INWES' mission.

- 2. Sylvia Ortega Azurdy**
AYNI Bolivia
Bolivia, South and Central America, and the Caribbean

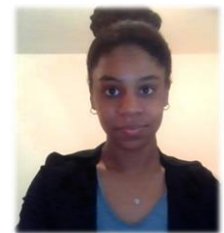


INWES embodies my dream: Empowering girls to be future technology leaders. To develop a network in Latin America is my next dream. As a Board member at INWES, I want to close the gender gap in

technology for young women in Latin America, because I have the experience to continue doing it. After organising programs where female teachers act as role models, where girls dare to repair computers of their brothers and uncles, I know the way. After having visited hundreds of schools in countries like, Haiti, Brazil, Surinam, Mexico, Bolivia, Indonesia, Bangladesh, Nepal, The Philippines and Cambodia among others, I know the way! We can empower girls. We can tap into the girls' natural curiosity about the world around them, and organize activities that emphasize hands-on inquiry-based exploration that help girls develop problem solving and critical thinking skills, STEM. Let's do it! I would like to start or reinforce the regional network of INWES partners in South America! I am very interested in being part of committees such as IT & Education and youth employability. I would like to give a chance to all these women. We are running a small pilot to provide training and employment for girls who are not able to pay university studies and have to find an occupation. In the sixty's we needed employees who knew how to type, what we need now is staff who is capable to use IT effectively. I would like to use my expertise in organizing projects and actions for "underrepresented" communities.

3. Kadiata Ba
AFFESTIM
Canada, North America

Professor of Mechanical Engineering
University du Quebec, Canada



I have been a professor of mechanical engineering at University du Quebec à Chicoutimi (Canada) for 6 years. For 7 years, I have been working to encourage and promote STEM with young girls at primary and college level. In Senegal, I collaborated with the polytechnic school of Dakar and HumanCap Senegal to promote science to young girls in secondary schools. I have collaborated with the Quebec Order of Engineers and the Saguenay-Lac-Saint-Jean school board, for the creation of video clips in immersive reality, aimed at contextualizing theoretical notions relating to STEM for girls.

I have the strong support of AFFESTIM, of which I am an active member (AFFESTIM has been a member of INWES since its creation). I benefit from full support of the organization CIWES (Canadian Institute of Women in Engineering and Sciences, former INWES-Institute of Education and Research). My university also fully supports community service activities for women in STEM as part of academic requirements.

I am highly motivated to join the INWES Board of Directors for the next three years. I share its values. I could serve in different ways, such as use my communication skill to reach populations in Canada and regions of sub-Saharan Africa and bring my experience and leadership in organizing international conferences and activities. I will also increase the collaboration between INWES, AFFESTIM and CIWES-ICFIS, and help INWES maintain and complete its database (with the ICWES database for example), within the Canadian Archives for Women in STEM held at the Library of the University of Ottawa.

4. Battsengel Baatar
WSTEM
Mongolia, Asia

Rector, GMIT



I would like to be the candidate for the Board of Directors of INWES 2024-26. In 2020, I was elected for first time as a member of the Board of Directors, INWES by the nomination of the WSTEM, a member organization of INWES. I joined WSTEM in Mongolia in 2012 and have been working for over 10 years

as a board member. After joining BOD of INWES I was elected as Vice President for Education and Research, an honourable duty for me conferred by the INWES members. It was a great moment for me to gain experience working with international women engineers and scientists. I was mainly involved in the GISE and Electrifying Women projects implemented by INWES with the cooperation of KWSE and the University of Leeds, UK, respectively. As VP for Education and Research, I involve INWES as a partner organization for Falling Wall Lab-Mongolia, a pitch competition for young scientists. The winner is awarded to participate world-renowned event in November in Berlin, Germany. INWES supports the event by providing jury members.

Besides my above-mentioned voluntary work, I have been working in the higher education sector for over 20 years. My knowledge and skills gained by working as Head of Department at the National University of Mongolia and as a quality and laboratory manager in a private company, as a Rector of the German-Mongolian Institute for Resources and Technology, the state-owned Universities in Mongolia might be an asset for the INWES.

5. Belén García de Pablos
Individual
Spain, Europe



Co-founder of Blue Ocean leading drivers

I am honored to be a candidate for the INWES Board because I have witnessed the positive change our organization brings to the lives of countless women globally. Last term was my first time as part of the INWES Board of Directors, even though I've been an individual member since 2018. Through my involvement in the Programs, Communications, and IT committees, I have gained valuable experience and now wish to encourage our members to volunteer in the diverse committees that INWES offers. INWES needs volunteers to run its activities and for the younger generations to take over the association in the future.

I'm a Spanish Naval Architect with an MBA. With my skills in Project Management, Business management, Financial management, Marketing, and IT, I am confident I can make a valuable contribution to INWES. I am committed to fostering connections and finding ways to support the organization, whether it's through my current committee involvement or by securing sponsored activities such as grants and internships, or bringing more members to the organization to increase our membership and strength.

Although my current position involves me taking charge of the Program's committee, I want to emphasize my utmost flexibility and willingness to embrace any role that the Members and the Board of Directors deems appropriate for me, be it fulfilling the crucial responsibilities of a treasurer or playing a role in any other committee.

I hope I'll be useful for INWES during the next term and I will do my best to support the organization and its members.

6. Lee Sun Heng
IET
Malaysia, Asia



Lee Sun has a strong passion for the organization's mission and a proven track record of success in previous leadership roles in NGO, The Institution of Engineer Malaysia (IEM), Penang Branch as Vice Chairman (2020-2022), Honorary Secretary (2018-2019), Past Chairlady (2019-2020), and advisory role

for Women Engineer (Penang Branch) (2021-2023). She upholds professional integrity and encompasses essential skills such as the ability to collaborate and build strong relationships with stakeholders from various backgrounds and cultures, strong communication and problem-solving skills, and the ability to adapt and thrive in a fast-paced environment in her managerial role as a registered Professional Engineer with the Board of Engineers (BEM). If were selected to be on board, Lee Sun will actively contribute to setting goals and developing strategies to achieve them. She will work closely with the team to identify areas for improvement and implement necessary changes to enhance efficiency and effectiveness. She would also contribute her project management knowledge to ensure the smooth execution of initiatives. With her diversified background, she can bring new perspectives and inventive ideas to the business, propelling it ahead. Her overall goal is to have a substantial impact on the growth and success of the organization by leveraging her skills, experiences, and love for the INWES mission. Since she is new to the INWES, her strong project management skills make her an ideal candidate for the Strategic Planning Committee, where she can contribute to the development and implementation of long-term goals and initiatives. In future, considering her leadership abilities, she would be an excellent candidate for an executive role such as Vice President relevant to industry collaborations, where she can promote organizational growth and dedication to making a difference.

7. Nadia Lamloum
ATFI
Tunisia, Middle East and North Africa



The first trip that involved ATFI with INWES. It was in Germany Munich to attend the regional conference organized by DIB and we fallen in love with the organization and the people. Since then, I was involved in the decisions and the organization of different programs made by the MENA region. As one of the most active ATFI member regarding of climate change and Gender, we are totally convinced that STEM activities can be a real solution for these problematics. That’s why we believe that being part of INWES board can be of a great impact to help Women around the world to fight against what we consider as the great gender inequality. We are aiming to strengthen the MENA Network and work on the development of this network and trying to influence the girls and women there to be more active and sensitive to the gender issues.

8. Mary Nduta Mwangi
AWSE
Kenya, English Speaking Sub-Saharan Africa

Department of Biochemistry, Microbiology & Biotechnology,
Kenyatta University



I am a professional teacher and researcher with a passion for the empowerment of women and girls. I am a founder member of the Association of African Women in Science and Engineering (AWSE). I have co-organised INWES events in the past, including regional meetings in 2013 (Kenya) and 2015 (Uganda). I have been INWES Director/Secretary General (2021-2023). During my tenure as INWES Secretary General I have endeavoured to ensure effective communication with members and the board and to publicise INWES across Africa through networking events thus contributing to the expansion of INWES membership. Through the generous donation of KWSE and logistical support of the Gender Mainstreaming Technical Working Group which I chair at Kenyatta University, I have established two University-led AWSE focal points, initiated High school mentorship activities and provision of sanitary pads. I am an expert peer reviewer for the annual UNESCO Loreal Young Talent program for Women Scientists in Sub-Saharan Africa program. As a researcher I have focused women’s empowerment through

poverty reduction, food security, Bioenergy, climate change resilience and Bio-entrepreneurship. These include: USAID- Feed the Future Striga Smart Sorghum for Africa (FtFSSSA) project and the Bill and Melinda Gates Foundation project on ‘What works for Women’s Economic Empowerment (WEE)’. If elected Director of INWES for a further term, my vision is to leverage on the experiences I have gained and my skills (communication, fund development, Networking, Gender and leadership, mentoring and entrepreneurship), to further contribute to the objectives of INWES and strengthen the African Regional Network.

9. Yumiko Nago
JNWES
Japan, Asia

The University of Tokyo



My first global involvement with INWES was at the 2015 APNN in Mongolia. As a committee member, I took part in organizing the INWES APNN in Yokohama in 2017. My work as a member of JWEF (Japan Women Engineers Forum), which constitutes JNWES in Japan, spans more than 20 years. We are now working with a wide range of targets, from elementary school students and their parents to senior citizens. In Japan it is still difficult to overcome the unconscious bias and the Gender Gap Index remains terribly low, and we are tackling our activities that will take Japan a step forward in the global network. In my five years of work experience in university public relations department, I acquired specialized skills and know-how through a wide range of activities, including website development, content creation, press release writing, and event management. I also spent nearly five years at a university organization promoting industry-academia collaboration, where I honed my project management skills. I have expertise and experience in public relations and project management (Certification of PMP®), and well versed in effective tools available to open communities including NPOs. My network of contacts with many academic associations and companies in Japan is also an asset. I find real pleasure in building win-win relationships with smiles and achieving goals with multiple stakeholders. I would like to join the INWES committee, and I will do my best to contribute to the development of INWES activities from a new perspective.

10. Sarah MC Peers
Individual
UK, Europe

New Model Institute for Technology and Engineering



I am an experienced INWES volunteer who has participated, supported and led many activities for INWES and its Regional Networks since 2016. I am a longstanding champion of diversity in STEM: I have been active in this area in the United Kingdom since 1992. I believe that global collaboration is vital for the situation of women in STEM to progress. and further that for the world to become a better place, we do need more women in STEM at all levels.

I hold several degrees in mathematics and an engineering PhD, and have taught at universities, colleges of technology and schools. I have also worked in technical consultancy for the oil & gas industry in the 1990s and more recently advising on STEM education that fit-for-industry and supporting innovation in technology and engineering sectors. I am currently back in academia leading new programme development at an innovative and brand new higher education institution for STEM.

I wish INWES to become even more inclusive: for example by opening up access to different languages, making better use of technology and the internet to connect INWES groups across the world. I am keen to

see more members in Latin America, and to work with others to grow our Regional Networks in Europe and Africa to match the excitement and energy of our members in APNN. I will encourage even more collaboration across other global networks and NGOs, and look to expand on our links with the United Nations.

11. Nelly Sakyi-Hagan
WASGN
Ghana, English Speaking Sub-Saharan Africa

University of Education, Winneba, Ghana



My involvement with INWES began after attending the INWES-ARN Conference in Nigeria in June 2019, where I realized its significance in promoting girls and women's interest in STEM fields. In 2021, I was elected to the current Board and appointed as Chair of the Awards Committee, which was a newly established committee during the tenure of the Board. Currently working as a Lecturer of Physics at the University of Education, Winneba, Ghana, I passionately advocate for women's and girls' participation in STEM education, and actively engage students and their communities in various STEM projects. My research background in STEM education has led me to conduct numerous training capacity workshops for both teachers and students in these fields. My primary focus is on closing the gender gap in STEM on a global scale, as evident through my instrumental role in the 2022 INWES-GISE Project. I also played a pivotal role in establishing the Women Advancing STEM in Ghana Network (WASGN), the first Ghanaian member network of INWES. I wish to serve on the INWES Board of Directors for the next three years in order to further contribute to and enhance the worldwide women's STEM network. My innovative mind set, effective communication skills, exceptional leadership abilities, and ability to collaborate harmoniously with others would greatly benefit INWES. If elected to the Board, my aim would be to enhance the working policies of the Awards Committee and actively support the growth of WASGN, the GISE Project, and advocate educational programs for girls.

12. Shun-Lien Sung
TWiST
Taiwan, Asia

President, MICROWORK Co. Ltd.



She is President of MICROWORK CO. LTD. Medicinal Regulatory affairs Services (1997 - now). She is also standing supervisor (2020-2023) of the Society of Taiwan Women in Science and Technology(TWiST) and a Supervisor (2023-2025) of National Alliance of Taiwan Women's association(NATWA). Profession Sung has rich NGO administrative experience, optimistic characteristics, communication and project management skills.

13. Juana T. Tapel
PTC WEN
Philippines, Asia

Director III, DA-Bureau of Agriculture & Fisheries Engineering



Engr. Juana "Jane" Torrano-Tapel, PhD is an ASEAN Chartered Professional Engineer (ACPE) for Agricultural and Biosystems Engineering. She is currently the Director III of Philippine Department of Agriculture - Bureau of Agricultural and Fisheries Engineering. She was Chair of the Philippine Technological Council - Women Engineers Network (PTC-WEN) for seven years. She started her

participation with INWES in the APNN Meeting in Hanoi, Vietnam in October 2018. During this meeting, she aired that PTC-WEN is willing to host INWES APNN Conference and Meeting, collocated with the Philippine Women Engineers Summit (PWES). Then, she presented the bid during the INWES APNN Meeting in Kathmandu, Nepal on September 2019 where PTC WEN bid was unanimously approved. She was a plenary speaker in APNN Conference in Taipei, Taiwan, but due to COVID19 restrictions we joined online. In fulfillment with our worthy commitment, we hosted INWES APNN through hybrid in August 2021 collocated with PWES5 where she was the Organizing Chairperson. We further participated onsite the hybrid 2022 APNN Meeting in Kuala Lumpur, Malaysia where she was voted as the Chairperson of APNN. Thenceforth, she accepted this Chairpersonship during the AGM held in Ulaanbaatar, Mongolia on July 2023. As the Philippine representative to INWES, she prepared the bid to host ICWES20 in August 2026. The ICWES20 bid was admitted and sealed with the MOU between INWES and PTCWEN. In her desire to track the preparation for a successful holding of ICWES20, it is advantageous if she will be one of the Directors of INWES. Nonetheless, she wishes to continue working with INWES to promote private and public practice of engineers and scientists. She is committing to sustain her involvement with INWES so as to achieve discernment of its goals and objectives in wider horizon.

14. Khin Sandar Tun
Women Engineers Chapter,
Federation of Myanmar Engineering Societies
Myanmar, Asia



Professional Engineer (Electronics)

I worked as a lecturer at Rangoon Institute of Technology and an Associate Professor at West Yangon Technological University. During my academic teaching periods, I supervised many research projects of Master and Ph.D students and I also did many innovative and beneficial research works for our country. I was recognized as Professional Engineer (Electronics) and ASEAN Chartered Professional Engineer in 2014. I received Honorary Fellow of AFEO and Fellow of AAET in 2018. As for Non-profit involvement, I started participation in Myanmar Engineering Society (MES) since 1995. Because of my enthusiastic leadership and visions on women engineers, I became the first youngest woman Vice President of MES since 2017. I emphasize my concentration in growing or strengthening of Women Engineers Chapter since I took the responsibility to lead MES-WE as Chairman in 2016. Based on these opportunities and experiences, The First Myanmar Women Engineers Summit was held in Yangon, Myanmar in 2020. I was elected a board member of INWES for the term of 2021 to 2023. When I became the board member of INWES, I was able to observe the efforts made by female engineers around the world for women in engineering and STEM. If I have the opportunity to serve as a board member again, I would like to contribute my services for promoting the empowerment and ability of women in engineering and STEM, improving wider networking and globalization among women engineers and encouraging and inspire the new generation of women engineers and scientists including Myanmar women engineers.

15. Hye-On Yoon
KWSE
Republic of Korea, Asia



Principal Expert Research Advisor, KBSI

My first involvement with INWES started in 2009 the Busan Asian Network Workshop of INWES which was hosted by KWSE. The importance of international cooperation of women scientists and engineers gave me an exceptional experience during 2012 INWES Regional Meeting at India where I took survey of woman scientists from 180 individuals in 20 countries attended the meeting. Based on the survey results

which was delivered to Korean government, two projects, the INWES APNN YWS Camp and the Smart Sister Program were launched at 2012 and 2013. Subsequently, I took the role of vice president and director of the International Cooperation Committee from 2014 to 2017 and then served as the 12th president of KWSE from 2018 to 2019.

As an environmental scientist, I have been actively involved at the Korea Basic Science Institute (KBSI) since 1994. My occupational position reached as a director of regional centers of KBSI (www.kbsi.re.kr). My contribution also extended to the national development of science and technology. I was appointed as an expert advisor in National Science & Technology Commission and the National Science and Technology Council.

As a researcher in energy and environmental technology and an active member of KWSE, I am eager to contribute to INWES activities as a board member for the next three years. With my established involvement in INWES and leadership experience in KWSE and my research institute, I am confident that I can make a meaningful impact and support women in STEM fields in various ways.