

INWES Triennial Report (2011-2014)



Contents

<i>I. Message from the President.....</i>	2
<i>II. About INWES.....</i>	4
<i>III. Meetings and Conferences.....</i>	5
<i>IV. Communications.....</i>	14
<i>V. Bylaw.....</i>	16
<i>VI. Finances and Funding.....</i>	16
<i>VII. Board of Directors.....</i>	20
<i>VIII. APPENDIX.....</i>	22



I. Message from the President



The third board of directors who have served from July 2011 to October 2014 went through a very busy and special three-year term. First of all, my heartfelt thank you to Sue Bird, the 2nd INWES President (2008-2011), who helped make a smooth transition of the board as well as for her contribution in preparing the 50th anniversary of ICWES. She has always been a warm-hearted mediator in the board meetings; she has been crucial in maintaining and passing on the INWES spirit. Preparing for the 16th International Conference of Women Engineers and Scientists (ICWES16) where we celebrated the 50th anniversary of ICWES was a long but rewarding process. I am especially proud of the growth of our regional networks over the past three years. APNN has already held 4 annual meetings and five new organizations have been formed through this network; WSTEM (Mongolia), TWiST (Taiwan), VAFIW (Vietnam), WISE-Nepal and WISE-Sri Lanka are new comers but very active members of INWES today. At ICWES16, the African Regional Network (ARN) was finally launched, thanks to the hard work over the past three years of our African members. However, by far the most challenging work over the three years was changing the bylaw in accordance to the new Corporation Act of Canada, where INWES is registered as a “not-for-profit corporation”. Thanks to the enormous effort of Liette Vasseur, the continuance agreement was accepted in August, 2014 from the Canadian Federal Government. We also have been able to reconstruct the INWES website which now makes possible online membership fee payment.

We have kept good relationship with UNESCO as an NGO partner, thanks to the hard work of Monique Moutaud as UNESCO liaison. We thank UNESCO and Samsung for the



generous financial supports that have made possible the travel of several of our members to ICWES16 and Kenya regional conferences in 2013.

I am extremely thankful to our directors of the board who have gave their time and effort for the growth of INWES and making many of the activities that you will see in this report possible, especially to Jung Sun Kim for her hard work as Secretary General, Roseni Dearden as publisher of INWES Newsletter, Joan Graf and Gail Mattson as Treasure and ICWES16 organizer, and Marlene Kanga as conference chair. I appreciate KWSE supports for my presidency and INWES activities including board meeting and APNN.

Through our activities:

We hope this world becomes safer by being faithful to the basics.

We hope this world is more peaceful by pursuing collaboration rather than competition.

We hope this world is sustainable by producing new knowledge.

We hope this world is a gender equal place by straightening what is crooked.

And, we hope this world is rich enough to keep the next generation actively pursuing their dreams by sharing our resources.

The activities of INWES from July 2011 to October 2014 are outlined in this report. I look forward to another exciting three years.

Sincerely,

Kong-Joo Lee, Ph.D.

President, INWES



II. About INWES

INWES, the International Network of Women Engineers and Scientists, is a world-wide network of women's organization in Science, Technology, Engineering and Mathematics (STEM), representing over 250,000 women from 60 countries. INWES is an official NGO partner of the operational type with the United Nations Educational, Scientific and Cultural Organization (UNESCO) since 2008. The partnership of INWES with UNESCO involves a dynamic cooperation to help women and girls worldwide to have access to education, especially in Science and Engineering.

The creation of INWES was initiated at the World Conference on Science for the 21st Century, convened by UNESCO and the International Council for Science in Budapest, where Article 90 was adopted encouraging efforts for the establishment of an international network of women scientists and engineers. A group of 20 women representing 10 countries and 8 organizations met in Canada, May 2001, to explore the creation of such a network. At ICWES12 in 2002, a unanimous vote gave rise to the creation of INWES. In April 2003, INWES was incorporated as a non-profit corporation under the laws of Canada, and in July 2005, the first Annual General Meeting (AGM) was held at Ewha Womans University in Seoul, Korea during ICWES13.

In 2008 at ICWES14, a need for a regional network was proposed at the board meeting. A workshop to initiate the Asian network was held in 2009 in Busan, Korea during the INWES regional conference. After three years, at ICWES15 in 2011, the Asia and Pacific Nation Network (APNN) successfully held its first general meeting in Adelaide, Australia. The African members also took effort in organizing a regional network and finally in 2014, the African Regional Network (ARN) had been launched at ICWES16 in 2014.

The objectives of INWES are: to become an influential voice on STEM issues for the benefit of women, gender equity and society; to increase the presence of women in mainstream STEM decision-making bodies; to promote exchange of information, networking, advocacy and a wide range of global and regional projects; to expand the opportunities for education and activities in STEM through the INWES.

INWES is a not-for-profit corporation governed by a board of directors consisting of elected



directors who represent organizations, corporations, university/institute, or individual memberships. The structure of INWES is shown in the following Figure.

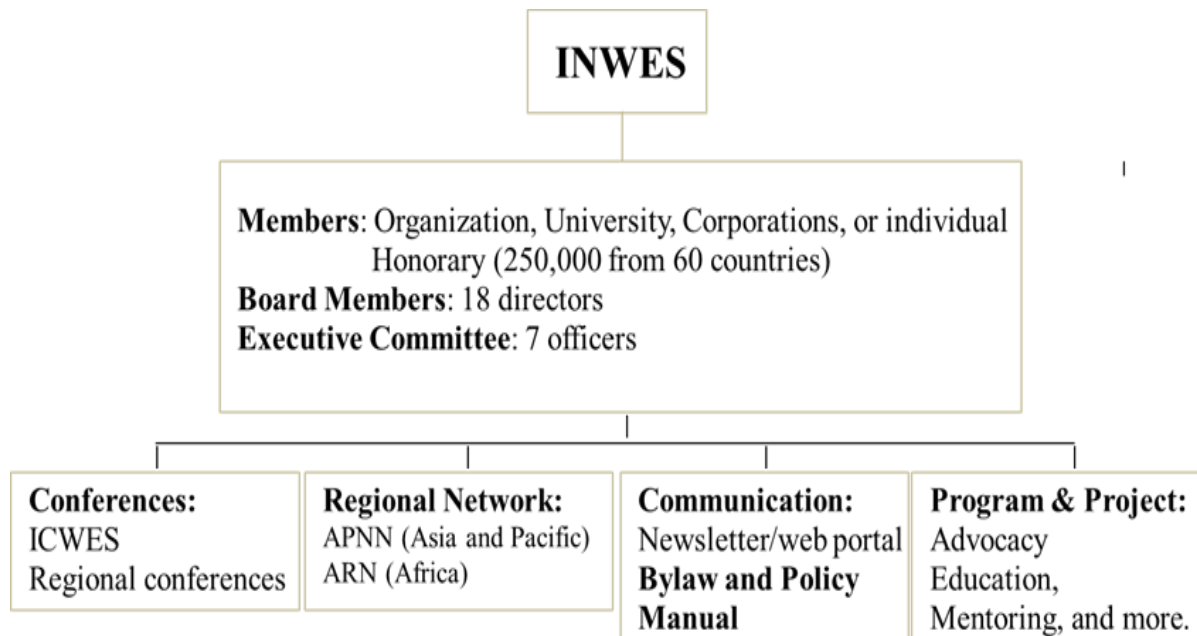


Figure 1. Structure of INWES

III. Meetings and Conferences

1. Board Meeting

INWES operates by the board of directors who are elected for a three year term. The board meets annually to discuss and plan the various activities of INWES. The newly elected board of directors held their first board meeting (14th Board Meeting of INWES) in July 2011 in Adelaide, Australia on the last day of ICWES15. The 13th Board Meeting (BM13) which was the last board meeting of the 2008, elected 16 directors preceded BM14 in Adelaide. In 2012, BM15 was held by conjunction with 2014 regional conference, in New Delhi, India, and 8 directors and 8 guests from 10 countries attended. Although board meetings are held during ICWES or regional conferences, the venue of BM16 had changed in 2013 from Nairobi, Kenya to Saarbrücken, Germany because of the travel advisories in several countries in response to the unfortunate incident in Nairobi. We would like to thank KIST-Europe and Myung Hee Jung, a former INWES board member, for hosting BM16 which was attended by 12 directors and 5 guests from 11 countries. What was mainly discussed during the BMs were



International Network of Women Engineers and Scientists

... building a better future worldwide

issues on bylaw change, preparation of ICWES16, archiving INWES documents, INWES history presentation at ICWES16 and regional network policies, website renewal, and strategies for membership recruitment and on-line membership fee payment systems which is now working where members can pay via the paypal system in the INWES website. The last BM17 of 2011~2014 term was held in Los Angeles, USA on previous day of ICWES16. At BM17, the summary reports from committee and affiliation organization was presented by board members and nomination of new directories with preparation for 2014~2017 was discussed.

The board meetings have been sponsored and/or supported by our members and member organizations as follows: Engineers Australia and Marlene Kanga for BM14, WISE-India and Sangeeta Wij for BM15, Yong Hyeon Shin and KWSE for BM16, and SWE and Gail Mattson for BM17.

- BM13, July 17-18, 2011, in Adelaide, Australia, hosted by Engineers Australia

- BM14, July 23, 2011, in Adelaide, Australia, hosted by Engineers Australia

- BM15, October 14-15, 2012, in New Delhi, India, hosted by WISE-India



Board members and Guests at BM15 in New Delhi, India

- Meeting of the Board of Directors (BM16) organized:

- BM16, December 16-17, 2013, KIST-Europe, Saarbrücken, Saarland, Germany



Board members and Guests at BM16 in Saarland, Germany



BM17 (Oct 21/22, 2014) at ICWES16, Los Angeles, USA

Figure 2. Board Meetings

2. Executive Board Meeting

The executive board meets about 5 times a year, usually via skype. From September 2011 to October 2014, 17 regular meetings via skype were held and dates are shown in Table 1. In addition, 3 special meetings were held, twice in person at the APNN and once via skype in Table 2.

2011	2012	2013	2014
	Jan. 24 th	Jan. 25 th	Jan. 22 nd
	Mar. 21 st	Mar. 20 th	Mar. 06 th
	June 6 th	May 22 nd	April 03 rd
Sept.	Sept.19 th	Aug. 28 th	May 15 th
Nov.	Nov. 21, 2012	Nov. 6 th	Sept. 18 th

Table 1. Dates of Executive board meeting from September, 2011 to October 2014



Date	Meeting Type	Remarks
Sept. 14 th , 2013	In prompt in person	At 2013 APNN Meeting in Taiwan
Sept. 30 th , 2013	Special via skype	For change of Board Meeting date
July 30 th , 2014	In prompt in person	At 2014 APNN Meeting in Seoul

Table 2. Dates of Special Executive board meeting from September, 2011 to October 2014

3. Annual General Meeting (GM or AGM)

The general meeting of members is held every year electronically or on site when ICWES is held. In 2012 and 2013, AGM8 and AGM9 were held electronically as shown in Table 3. The most recent meeting is the AGM10 which was held in Los Angeles in October 2014 during ICWES16. A special General Meeting was held in June 2014 via skype to inform and vote on the new bylaw.

AGM	Date	Venue	Attendance	Quorum	Remarks
AGM8	December 2012	Electronic	14 organizations 1 university 7 individual	47% (verified)*	
AGM9	December 2013	Electronic	13 organizations 1 university 4 individual	74% (verified)*	
SGM-2014	June 2014	Skype	10 organizations 2 university 8 individuals	71% (verified)*	New bylaw approved
AGM10	October 2014	L. A., USA	18 organizations 1 universities 6 Individuals 5 proxies	34.5% (verified) (New bylaw requires 15% for quorum)	Election of directors 2014-2017

Table 3. Summary of Annual General Meetings from 2011 to 2014



*Old bylaw states that quorum is over 40% of organizational members in good standing while new bylaw as of 2014 states that quorum is over 15% of all members in good standing.

4. The International Conference of Women Engineers and Scientists (ICWES)

INWES has been overseeing the International Conference of Women Engineers and Scientists (ICWES) since 2005 ICWES13. ICWES16 (2014) was hosted by the Society of Women Engineers (SWE) and Gail Mattson served as the organizing chair. The organizing committee and Joan Graf, the SWE representative to INWES, have spent a lot of time and energy in organizing the venue, website, specific programs, travel awards and fundraising. The theme of the conference was “A global exchange for change.” ICWES was attended by 8,300 from 47 countries. At ICWES16, we have celebrated the 50th year anniversary of ICWES; the first ICWES, ICWES1 was held in June, 1964 in New York, hosted by SWE. The 50 years of ICWES together with the herstory of INWES was presented as photographs shown in Figure 3. Jennifer Atchison, SWE member who is currently stationed in Germany at INM, had volunteered for this project. She worked together with two student interns from Drexel University and Myung Hee Jung, Margaret Ajibode, Roseni Dearden and Jung Sun Kim, producing the history of INWES and ICWES in a video, banners and wall posted presentations.





Figure 3. INWES half centennial herstory presented at ICWES16

The next ICWES will be hosted by WISE-India in 2017 and venue decided as New Delhi, India. The decision was made after a call had been announced and applications reviewed, approved by the board of directors and by members at the AGM10. We look forward to seeing many of our members in New Delhi, India then. The following is lists the past ICWES venues and year it was held (Figure 4).

Chronicles of ICWES

ICWES 1 (1964) New York, U.S.A.	ICWES 8 (1988) Abidjan, Ivory Coast
ICWES 2 (1967) Cambridge, U.K.	ICWES 9 (1991) Warwick, U.K.
ICWES 3 (1971) Turin, Italy	ICWES 10 (1996) Budapest, Hungary
ICWES 4 (1975) Cracow, Poland	ICWES 11 (1999) Chiba, Japan
ICWES 5 (1978) Rouen, France	ICWES 12 (2002) Ottawa, Canada
ICWES 6 (1981) Bombay, India	ICWES 13 (2005) Seoul, Korea
ICWES 7 (1984) Washington DC, U.S.A.	ICWES 14 (2008) Lille, France
	ICWES 15 (2011) Adelaide, Australia
	ICWES 16 (2014.10.23-25) L.A., USA
	ICWES 17 (2017) New Delhi, India

Figure 4. Chronicles of ICWES

5. Regional Conference

In the years that ICWES is not held, the INWES Regional Conference is held. The size of the meeting is smaller than ICWES and usually rotates in different region to accommodate as many members as possible from different parts of the globe. Figure 5 shows the chronicles of the regional conferences of INWES.



2003 Regional Conference, Daejeon, Korea
2004 Regional Conference, Nairobi, Kenya
2006 Regional Conference, Lille, France
2007 Regional Conference, Wroclaw, Poland
2009 Regional Conference, Busan, Korea
2010 Regional Conference, Washington DC, U.S.A.
2012 Regional Conference, New Delhi, India
2013 Regional Conference, Nairobi, Kenya

Figure 5. Chronicles of INWES Regional Conference

The 2012 regional conference was held in October in New Delhi, India, hosted by WISE-India. The decision was made after applications have been reviewed. The theme of the 2012 conference was “Women in Science, Engineering, Architecture, Technology and Consultancy” and “Green Infrastructure and Projects.” About 200 delegates from 20 countries attended where 40 technical papers and 30 posters were presented in 9 technical sessions and a poster session (Figure 6).



Figure 6. 2012 INWES Regional Conference in New Delhi, India

The next Regional conference was held in Nairobi, Kenya in November, 2013, hosted by the African Women Scientists and Engineers (AWSE) under the theme, “Innovative programs and strategies to increase the number and career successes of women in STEM.” About 70 delegates from 11 countries attended and 84 abstracts were presented in 9 different sessions. Originally more participants were to travel to Kenya, but due to an unexpected terror incident,



travel advisories in various countries had hindered the travel of some of our members. However, despite all this, the meeting went very well, where in-depth discussions and information sharing went on. The travel awards from UNESCO and financial support of Samsung were quite helpful in making the meeting a success (Figure 7).



Figure 7. 2013 INWES Regional Conference in Nairobi, Kenya

6. Establishment of Regional Network and their Meetings

(1) Asia and Pacific Nation Network (APNN)

Since 2011, INWES has regional networks that organize meetings in specific regions. The first regional network that has been initiated is the APNN, the Asia and Pacific Nation Network. INWES members in the Asia and Pacific region are automatic members of the APNN and currently consists of members in Australia, India, Japan, Korea, Malaysia, Mongolia, Nepal, Pakistan, New Zealand, Sri Lanka, Taiwan and Vietnam. What is exciting about the regional network is that the proximity in distance allows more effective information sharing and communication. Five new organizational members of INWES have been added through the APNN, most of which are newly established organizations by the individual members of INWES. The five new organizations are TWiST of Taiwan, WSTEM of Mongolia, WISE-Nepal of Nepal, WISE-Sri Lanka of Sri Lanka and VAFIW of Vietnam. The first Chair organization was KWSE of Korea and Chairperson was Dr. Hyang Sook Yoo for three years and in 2014, JNWES has been elected as the second Chair of APNN and Chairperson is Kayoko Sugahara. Annual meetings have been held in Australia (2011), Malaysia (2012), Taiwan (2013), Korea (2014), and 2015 meeting is to be held in Mongolia



in June. The following photograph shows the highlights of APNN to date (Figure 8).



Figure 8. Annual Meetings of INWES Regional Network APNN

(2) African Regional Network (ARN)

The second regional network has been launched at ICWES16 in Los Angeles, USA, in October 2014. This was after great efforts of our African members, Okon Uduakobong (Nigeria), Caroline Thoruwa (Kenya) and Rufina Dabo Sarr (Senegal). The first preparation meeting was held at ICWES15 in Adelaide, Australia in 2011. A follow up meeting was then held at the regional conference in New Delhi in 2012. And after online meetings in 2014, the network has officially been started with Okon Uduakobong as the first Chairperson. We look forward to hearing many more exciting programs and meetings from the ARN (Figure 9).



Figure 9. The launching of ARN in 2014, Los Angeles, USA



IV. Communications

1. INWES Newsletters

The enormous work of Roseni Dearden has made possible the publication of 10 online newsletters as shown in Figure 10. These are posted on our website (www.inwes.org) and also circulated by e-mail to all members. Thanks to Roseni, it is also available on Facebook, and Twitter. The address are www.facebook.com/groups/inwes and Twitter @INWES_Engineers. A very special thank you to Roseni's daughter, Nina Dearden, who has volunteered to edit each newsletter. We were able to get printed versions of newsletter 17 for distribution to participants in ICWES16 with the support of Yolanda George at AAAS. Yolanda has always been there to help us out in time of needs. Thank you so much.

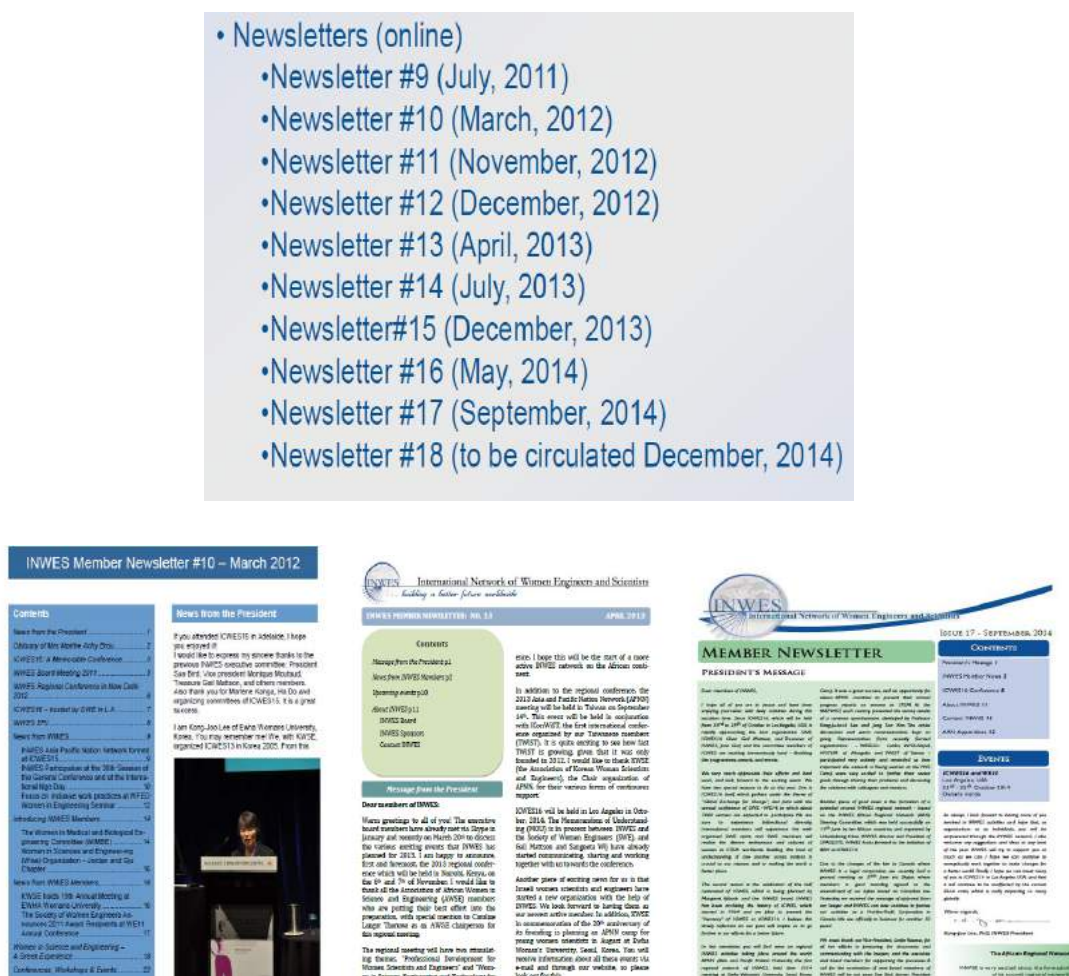


Figure 10. Published INWES Newsletters for 2011-2014



2. Website

We were able to re-construct our website, <http://www.inwes.org>, thanks to KWSE for the financial support and Liette Vassuer, Jung Sun Kim and Hyon Jung Jang's time and effort. We can now pay for our membership fee through the paypal system, and share news and events, newsletter, resources, membership, and other activities. Additionally, we had planned to set up a mentoring program for international communication, add the contents on the regional network and make further additions and changes, but these activities have been relayed to the new board of 2014-2017. We look forward to more improvements in the website in the next three years and hope it will become more member-friendly. We welcome volunteers to help-out manage our web portal.

3. Membership

The current membership as of October 2014 includes: 47 Organizational Members, 6 University/Institutional Members, 199 Individual Members and 11 honorary members representing over about 200,000 women scientists and engineers over 45 countries around the world. From 2011-2014, five new organizations were created and became a member of INWES through the APNN which are:

- WTEM: Association for Mongolia Woman Scientists, which had followed the organization manual of INWES
- TWiST: Society of Taiwan Women in Science and Technology (TWiST) which was organized in Oct 2011 and hosted the 2013 APNN meeting
- WISE-Sri Lanka: Women in Science and Engineering Sri Lanka which had a kick-off meeting in July, 2013, issued first newsletter in May, 2014 and participated in 2014 APNN and 2014 KWSE/YWS camp
- WISE-Nepal: Women in Science and Engineering Nepal which had attended 2014 APNN and 2014 KWSE/YWS camp
- VAFIW; Vietnam's new association for intellectual women was also newly organized and became a member of INWES. VAFIW has participated in the 2013 and 2014 APNN Meetings.

We still need to recruit new corporate members.



V. Bylaw

INWES in accordance with the new Corporation Act of Canada went through a bylaw change. We started to prepare the draft of the new bylaw from 2012 and then the successful approval of the INWES By-laws in June 2014 at special AGM via skype was made. And finally the continuance agreement from the Canadian Federal Government was accepted in August, 2014, thanks to the efforts of Liette Vasseur. In the next three years, the new board members will be working on the revision of the policy manual that will outline policies such as membership and programs. A committee headed by Marlene Kanga has been organized for this activity.

VI. Finances and Funding

INWES runs its activities by with membership fees and various types of funding. The UNESCO travel funds are very helpful for members travelling to ICWES and regional conferences. Thanks to the enormous work of Monique Moutaud and Margaret Ajibode, \$10,000 for the 2013 Nairobi regional conference and \$18,000 for ICWES16 was granted. In addition, the KWSE funding from the Korean Government for International activities of \$ 50,000 was allocated for INWES programs and Board meetings (2013, 2014) as well as for travel of some of our members to ICWES16. Our corporate sponsor, Samsung supported the 2013 regional conference with \$10,000 and an additional \$10,000 was given to support travel of African members to ICWES16. For regional meetings and regional conferences, local sponsors have supported the host organizations, and we are very grateful to all our valuable sponsors that made the three years of INWES activities possible.

The financial report follows, which has been prepared by Joan Graf.



International Network of Women Engineers and Scientists

... building a better future worldwide

Finances 2010-2013--- Expense

	2010		2011		2012		2013	
	Budget	Reviewed	Budget	Actual end of year	Budget	Estimate Actual	Budget	Estimate Actual
Expenditures								
Administrative								
Office Expenses	\$1,500	\$40	\$600	\$2,338	\$2,824	\$334	\$1,000	\$43
Professional Services	\$8,500	\$688	\$200	\$2,034	\$8,948	\$1,954	\$8,948	\$500
Financial Audits/Reviews	\$2,000	\$1,890	\$2,034	\$875	\$2,034	\$0	\$2,200	\$4,068
Board Insurance	\$1,100	\$1,026	\$1,026	\$1,026	\$1,026	\$0	\$1,100	\$1,026
Bank Charges/Exchange	\$0	\$696	\$300	\$917	\$1,200	\$759	\$1,200	\$707
Subtotal	\$13,100	\$4,340	\$4,160	\$7,190	\$16,032	\$3,048	\$14,448	\$6,344
Governance								
Board Meetings	\$500	\$0		\$0		\$0	\$500	\$0
Board Travel	\$1,500	\$0	\$700	\$0	\$3,000	\$0	\$3,000	\$0
Subtotal	\$2,000	\$0	\$700	\$700	\$3,000	\$0	\$3,500	\$0
Activities/Projects								
Membership Fees	\$30	\$30	\$30	\$30	\$30	\$30	\$30	\$0
New Assoc Seed Funding	\$900	\$0					\$500	\$0
Youth Events/Scholarships	\$5,000	\$0	\$15,356	\$16,461	\$0	\$0	\$0	\$6,287
Conferences - ICWES16	\$5,249	\$3,617		\$0		\$0	\$1,500	\$0
Annual Progress Report	\$1,500	\$0		\$0	\$200	\$0	\$250	\$0
Website Upgrades	\$7,500	\$27	\$500	\$500	\$500	\$0	\$2,500	\$0
Subtotal Expenditures	\$35,279	\$8,014	\$20,246	\$24,881	\$19,762	\$3,078	\$22,728	\$12,631
SWE Loan Repayment	\$5,000	\$0	\$5,000	\$0	\$5,111	\$4,193	\$0	\$0
Total Expenses	\$40,279	\$8,014	\$25,246	\$24,881	\$24,873	\$7,270	\$22,728	\$12,631
Revenue vs Expenditures	-\$3,579	-\$463	\$21,596	\$31,498	-\$14,172	\$17,774	-\$10,708	-\$1,832



Finances 2014--- Revenue

	2013		2014			
	Budget	Estimate Actual	Budget	Estimate Actual		
Revenues						
Membership						
Organisational	\$7,070	\$3,910	\$5,000		\$1,000	\$165
Corporate	\$2,500	\$0	\$1,000			
University	\$2,000	\$500	\$1,000			
Individual	\$250	\$76	\$250			
Subtotal	\$11,820	\$4,486	\$7,250	\$6,484		
Grants & Donations						
Individuals						
Corporate						
Organisational		\$6,287				
Government Agency	\$0		\$0			
Subtotal	\$0	\$6,287	\$0	\$0		
ICWES Refund	\$0		\$0			
ERI Loan Payment						
Interest	\$200	\$26	\$200			
Subtotal Revenue	\$12,020	\$10,799	\$7,450	\$6,484		
Conference overage						India
ICWES 15 unesco return	\$0		\$0			
Region meeting return	\$0		\$0			
Total Revenue	\$12,020	\$10,799	\$7,450	\$6,484		



Finances 2014--- Expense

	2013		2014		
	Budget	Estimate Actual	Budget	Estimate Actual	
Expenditures					
Administrative					
Office Expenses	\$1,000	\$43	\$1,000	\$30	\$43
Professional Services	\$8,948	\$500	\$6,000	\$5,432	
Financial Audits/Reviews	\$2,200	\$4,068	\$2,200		\$2,034
Board Insurance	\$1,100	\$1,026	\$1,100	\$0	\$1,026
Bank Charges/Exchange	\$1,200	\$707	\$800	\$361	
Subtotal	\$14,448	\$6,344	\$11,100	\$5,823	
Governance					
Board Meetings	\$500	\$0	\$500	\$0	
Board Travel	\$3,000	\$0	\$3,000	\$1,245	
Subtotal	\$3,500		\$3,500	\$1,245	
Activities/Projects					
Membership Fees	\$30	\$0	\$30	\$0	
New Assoc Seed Funding	\$500	\$0	\$500	\$0	
Youth Events/Scholarships	\$0		\$0		
		\$6,287			
Conferences - ICWES16	\$1,500	\$0	\$2,000	\$0	\$0 anniversary info
Annual Progress Report	\$250	\$0	\$250	\$0	
Website Upgrades	\$2,500	\$0	\$2,500	\$0	
Subtotal Expenditures	\$22,728	\$12,631	\$19,880	\$7,068	
SWE Loan Repayment	\$0	\$0	\$0	\$0	
Total Expenses	\$22,728	\$12,631	\$19,880	\$7,068	
Revenue vs Expenditures	-\$10,708	-\$1,832	-\$12,430	-\$584	



VII. Board of Directors

The following is the list of board of directors who have served from 2011 to 2014. Many thanks for your enormous service and contribution.

< Members of the Board 2011 – 2014 >

Kong-Joo Lee

(Korea, President)

Liette Vasseur

(Canada, Vice President)

Joan Graf

(USA, Treasurer)

Monique Moutaud

(France, President Elect)

Sangeeta Wij

(India, Vice President 2012-2014)

Jung Sun Kim

(Korea, Secretary General)

Sue Bird (UK, Past President)

Nageen Ainuddin (Pakistan)

Margaret Ajibode (UK)

Rufina DABO SARR (Senegal)

Roseni Dearden (UK)

Pam Wain (UK)

Ewa Okon Horodynska (Poland)

Kayoko Sugahara (Japan)

Okon Uduakobong (Nigeria)

Marlene Kanga (Australia, Vice President 2011-2012)

Here is the newly elected board of directors for the period 2014 to 2017. We look forward to the many activities they will be conducting

< Members of the Board 2014 – 2017 >



Kong-Joo Lee
(Korea, President)



Liette Vasseur
(Canada, President
Elect)



Gail Mattson
(USA, Vice President)



Marlene Kanga
(Australia, Vice
President)



International Network of Women Engineers and Scientists

... building a better future worldwide



Roseni Dearden
(UK, Vice President)



Joan Graf
(USA, Treasurer)



Margaret Ajibode
(UK, Secretary General)



Aude Abena
(Cameroon)



Claudia Bergbauer
(Germany)



Rufina DABO SARR
(Senegal)



Durdana Habib
(Pakistan)



Seong Ok Han
(Korea)



Ewa Okon-Horodynska
(Poland)



Yvette Ramos
(Switzerland)



Kayoko Sugahara
(Japan)



Caroline Thoruwa
(Kenya)



Sangeeta Wij
(India)



Chia-Li Wu
(Taiwan)



VIII. APPENDIX

Year	Location	Theme
ICWES 1 (1964)	New York, U.S.A.	<i>Focus for the Future Developing Engineering and Scientific Talent</i>
ICWES 2 (1967)	Cambridge, U.K.	<i>Enough for Everyone. The Application of Technology to World Problems</i>
ICWES 3 (1971)	Turin, Italy	<i>Planning for Progress. Women's Professional & Family Duties</i>
ICWES 4 (1975)	Cracow, Poland	<i>New Techniques in the Service of Mankind</i>
ICWES 5 (1978)	Rouen, France	<i>La Contribution des Femmes Ingenieurs et Scientifiques à la Solution des Problèmes que le Progres Technologique pose aux Diverses Sociétés Humaines</i>
ICWES 6 (1981)	Bombay, India	<i>Science, Technology & Society</i>
ICWES 7 (1984)	Washington DC, U.S.A.	<i>Technology: An International Bridge</i>
ICWES 8 (1988)	Abidjan, Ivory Coast	<i>Science, Technologie et Developpment</i>
ICWES 9 (1991)	Warwick, U.K.	
ICWES 10 (1996)	Budapest, Hungary	
ICWES 11 (1999)	Chiba, Japan	<i>Science and Technology for Global Ecology</i>
ICWES 12 (July, 2002)	Ottawa, Canada	<i>Women in a Knowledge - Based Society</i>
ICWES 13 (July, 2005)	Seoul, Korea	<i>Women Engineers and Scientists: Main Force to Reshape the Future World</i>



ICWES 14 (July, 2008)	Lille, France	<i>A Changing World: New Opportunities for Women Engineers and Scientists</i>
ICWES 15 (July, 2011)	Adelaide, Australia	<i>Leadership, Innovation, Sustainability</i>
ICWES 16 (October, 2014)	L.A., U.S.A	<i>A Global Exchange for Change</i>

Year	Location	Theme
Regional Conference (2003)	Daejeon, Korea	<i>The Converging of Bio, Information, Environment, Energy, Space and Nano Technology</i>
Regional Conference (2004)	Nairobi, Kenya	<i>Leadership Workshop for African Women Scientists and Engineers</i>
Regional Conference (2007)	Wroclaw, Poland	<i>Women Scientists and Engineers in New EU countries and Eastern Europe: Strategies for a Global Workforce</i>
Regional Conference (27~29 Aug., 2009)	Busan, Korea	<i>Women in Green Technology Towards a Sustainable Asia</i>
Regional Conference (26~27 Aug., 2010)	Washington DC, U.S.A.	<i>Opportunities for Developing Country-Specific Projects for Women in Science and Engineering in Education, Workforce and Economic Development</i>
Regional Conference (12~13 Oct., 2012)	New Deli, India	<i>Women in Science, Engineering, Architecture, Technology and Consultancy / Green Infrastructure and Project</i>
Regional Conference (19~21 Nov., 2013)	Nairobi, Kenya	<i>Professional Development for Women Scientists and Engineers / Women in Science, Engineering and Technology for Sustainable Development</i>



International Network of Women Engineers and Scientists

... building a better future worldwide

Year	Location
APNN (19 July, 2011)	Adelaide, Australia
APNN (13 June, 2012)	Kuala Lumpur, Malaysia
APNN (14 September, 2013)	Taipei, Taiwan
APNN (30 July, 2014)	Seoul, Korea

< Reports of APNN >

